

Weight recording water trough

Need: Introduce PLF based early warning system into sheep and goat production

- Aim:**
- Automatically collect individual animal weight and drinking habits data
 - Enable zero animal habituation to the new device/procedures
 - Zero interference with existing farmer processes and procedures
 - Optimize production
 - Increase animal welfare

Description:

The SmarTrough is fitted with multitude of sensors to record individual weight, water consumption and drinking habits of sheep/goats.

The collected data is processed by advanced algorithms to generate business insights to the farmer immediately.

The insights are then disseminated via a carefully crafted web interface to enable maximization of farm results.

How to Implement:

The SmarTrough is a plug and play product.

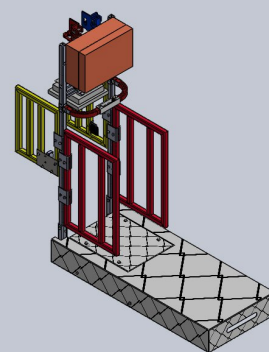
It is mounted, either on an existing trough or an integrated one.

Each SmartTrough may serve up to 120 animals

Multiple SmartTrough devices maybe be introduced seamlessly in the same yard, farm or pasture.

Once the device is in place, animals must use the sensor enriched troughs to drink, thus allowing the monitoring and capturing of weight and drinking habit data continuously.

The SmartTrough requires electricity, water supply and an internet connection to allow for data communication to server.



Country:

Israel



Production System (dairy or/and meat sheep/goat):

Dairy/Meat sheep and goat

Category of Animal (ewe, goat, replacement, lamb, kid):

Lambs, Goats

Attachment/links:

[HTTPS://WWW.YOUTUBE.COM/WATCH?V=H0L62DWSZJ0](https://www.youtube.com/watch?v=H0L62DWSZJ0)

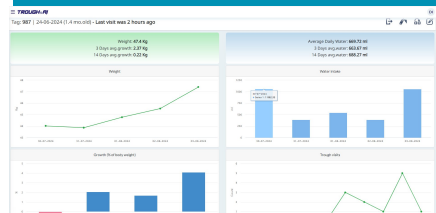
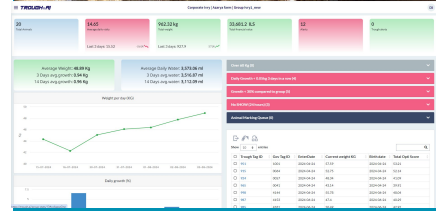
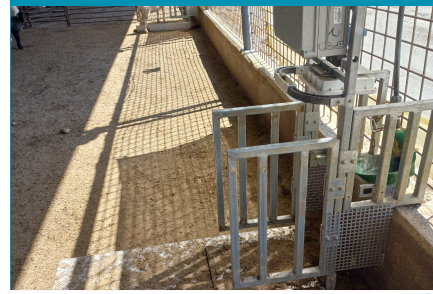


Expected Benefits:

- Increased animal welfare
- Increase in profit
- Reduce waste (mainly in feed consumption, for ill-performing animals)
- Better control over your farm
- Improve your genetics by best-performance selection

Costs and Challenges

- The cost of the system varies depending on farm size.
- It comprises a one-time payment for the Smart-Trough devices, a monthly subscription, and ear tags.
- You will need to tag the animals with Trough.AI ear tags for the system to support the individual data collection – the tags are supplied.



This tech works for me because it saves me money by showing me my best/worst performing animals

DAVID, FARMER FROM ISRAEL



www.smartplatform.network